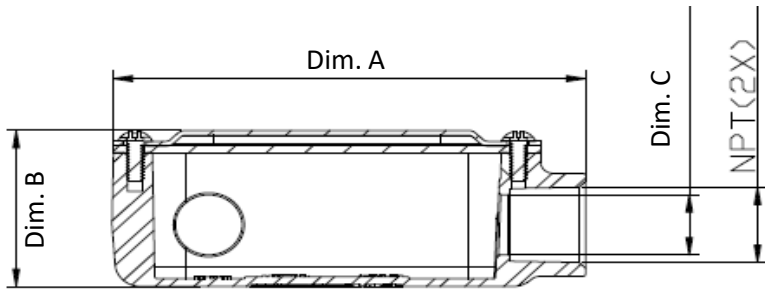
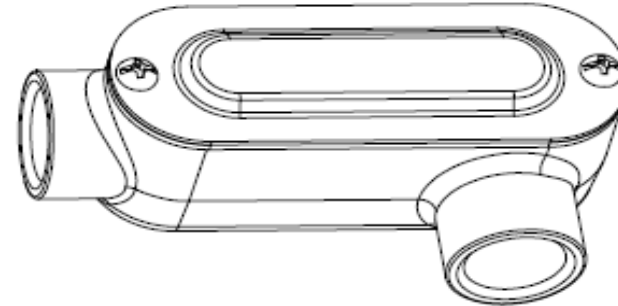
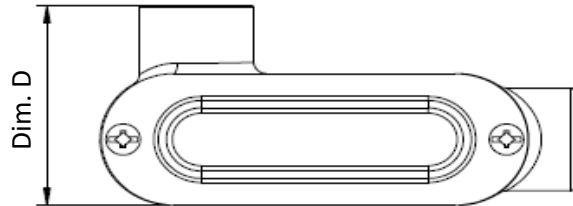


## LL Threaded Conduit Bodies with Steel Cover & Gasket - Gray



Item #	Size (NPT)	Dim. A	Dim. B	Dim. C	Dim. D
LL050	1/2"	4.31	1.59	0.61	2.02
LL075	3/4"	5.08	1.86	0.81	2.30
LL100	1"	5.92	2.12	1.04	2.68
LL125	1-1/4"	7.82	2.73	1.37	3.52
LL150	1-1/2"	7.82	2.73	1.60	3.52
LL200	2"	10.05	3.64	2.05	4.27
LL250	2-1/2"	12.83	4.29	2.46	5.88
LL300	3"	12.83	4.84	3.06	5.88
LL350	3-1/2"	15.59	5.90	3.54	7.65
LL400	4"	15.59	5.90	4.01	7.65



TOLERANCE UNLESS OTHERWISE SPECIFIED: X.X +/- 0.2 .XX +/- 0.1

BODY MATERIAL	Aluminum Die Cast
COVER MATERIAL	Steel
CERTIFICATIONS:	UL 514A (QCIT)
MARKING:	cULus
CERT#	E362604



Superflex Ltd.  
400 S 2nd Street  
Elizabeth NJ 07206

<b>PART NO</b>	REV DATE
REV: 1	8/1/2023